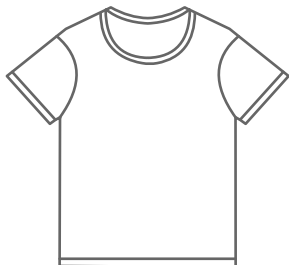


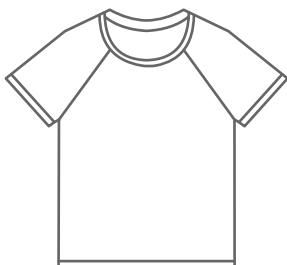
# Team Uniform Regulations for Participants

## Choice of style:

Choose common round neck T-shirts or round-neck raglan sleeve T-shirts with suitable materials, some suggestions include:



Common round neck short sleeve T-shirts



Round-neck short raglan sleeve T-shirts



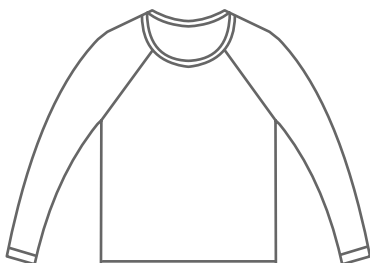
Common round neck short sleeve T-shirts



Round-neck short raglan sleeve T-shirts



Common round neck long sleeve T-shirts

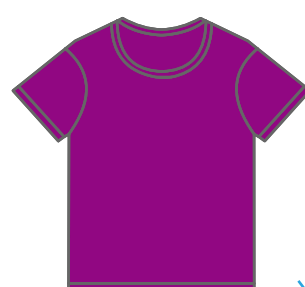


Round-neck long raglan sleeve T-shirts

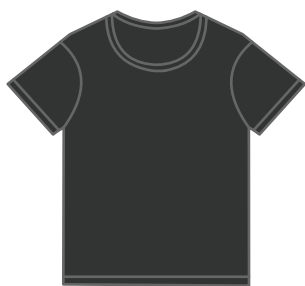
Try to avoid tank tops, V-neck, high-collar T-shirts and some other styles. If a unique design is preferred, please consent the sponsor of the competition. There is no restriction to the uniform material.

## Colour

Large area of blue and red or similar colours are to be avoided. These two colours can cause confusion distinguishing the blue and red team. Colours apart from red and blue are suggested. For Example:



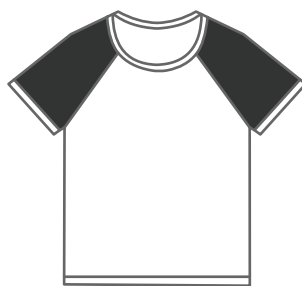
Darker theme colour is preferred in order to be consistent with the robot's tone, but uniform can be varicoloured, or colour printed. Below are some recommended designs:



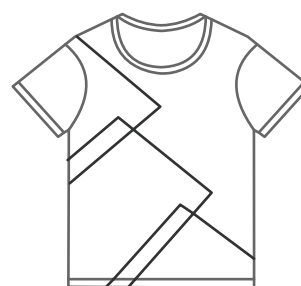
Dark unicolored



Gradient or colour printed



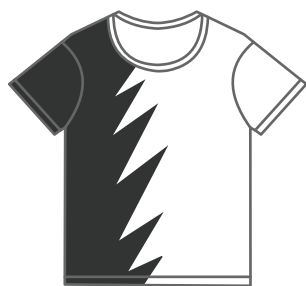
Varicoloured raglan sleeve



Stylish line Pattern



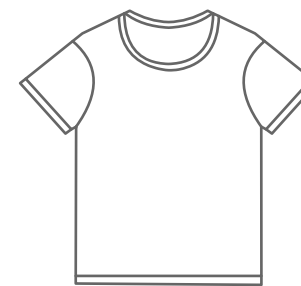
Thick stripe



Colour contrast

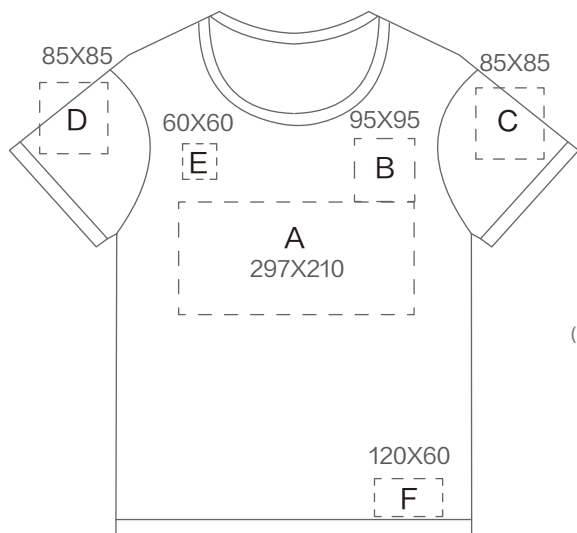


Striated thin stripe

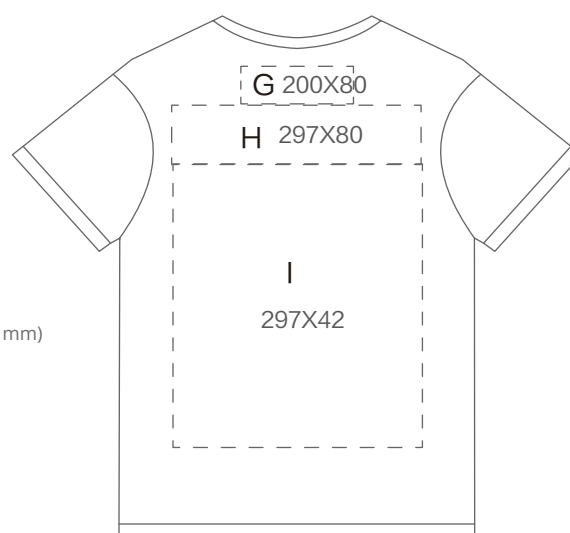


Light unicolored

Elements Area:



Front View



Back View

- A Front chest Area: Full name of school
- B Logo Area: Sponsors' logo
- C Left shoulder area: Team logo and Team name
- D Right shoulder area: School logo for China mainland team  
Country flag/District flag for International/Macau/Hongkong/Taiwan teams
- E Logo area: RM "R" LOGO
- F Bottom left corner: Freedom of choice
- G Back collar area: Team name
- H Upper back area: Name of team member in alphabets
- I Bottom back area: Freedom of choice

## User guide illustration-Light colour-based

### School Logo

The school logo should fully extend within the 85mm×85mm area, and make sure to keep the original colour of the logo (for light colour-based uniform)

### International/Macau/Hongkong/Taiwan teams

The country flag/District flag should be placed here, with 85mm wide.

### R LOGO

RoboMaster R logo should fully extend within the 60mm×60mm area. Do not deform the original version. Colour Reference:



#### Primary Grey

C=0 M=0 Y=0 K=80  
425C

### Sponsor LOGO

Place the logo vertically, and keep the original colour



深圳科学技术大学  
Shenzhen University of Science and Technology

### Name of school

Use the horizontal name version from the school logo (Both English and Chinese). Let the name fully extend at the back area and keep the colour similar to the school logo is recommended.

### Team Name

There is no restriction to font style but try to keep the colour similar to the school logo. The font size should be visually smaller than the member's name.

机甲狂热  
FANG DANDAN

### Name of Member

Use team member's alphabetized name (pinyin) and use Helvetica Neue Condensed bold font style. Do not exceed 297mm in length. The name should be placed in harmony with the whole layout and again to keep the colour similar to the school logo is recommended.

## User guide illustration-Dark colour-based

### School Logo

The school logo should fully extend within the 85mm×85mm area, and make sure to keep the original colour of the logo (for light colour-based uniform)

### International/Macau/ Hongkong/Taiwan teams

The country flag/District flag should be placed here, with 85mm wide.

### R LOGO

RoboMaster R logo should fully extend within the 60mm×60mm area. Do not deform the original version. Colour Reference:



#### Primary White

C=0 M=0 Y=0 K=80

### Sponsor LOGO

Place the logo vertically, and keep the original colour

### Name of school

Use the horizontal name version from the school logo (Both English and Chinese). Let the name fully extend at the back area and keep the colour similar to the school logo is recommended.

